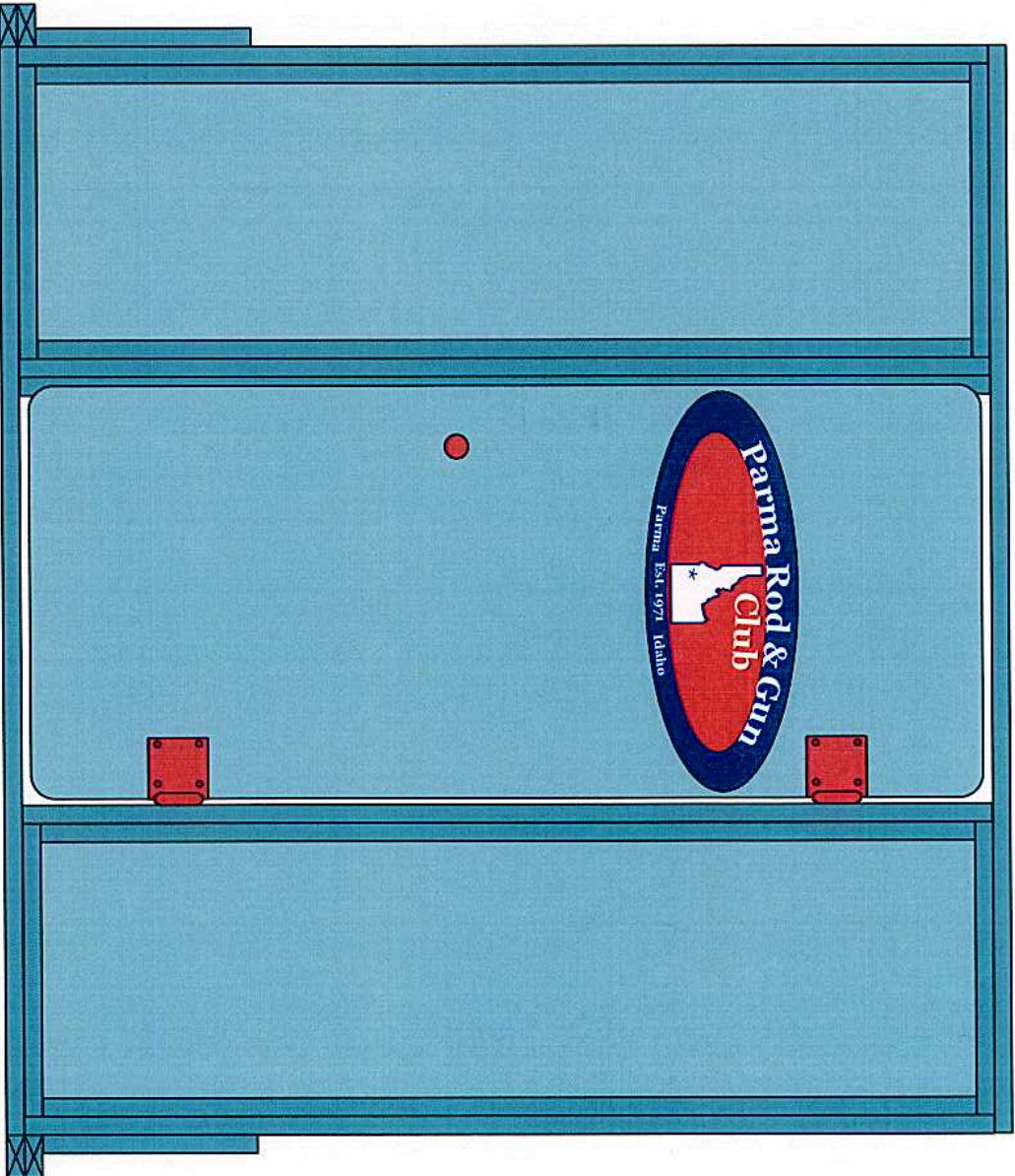
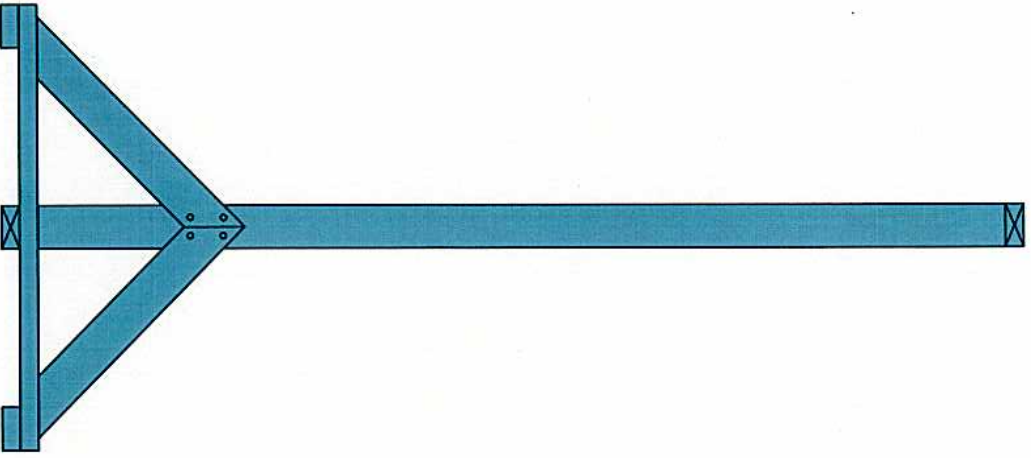


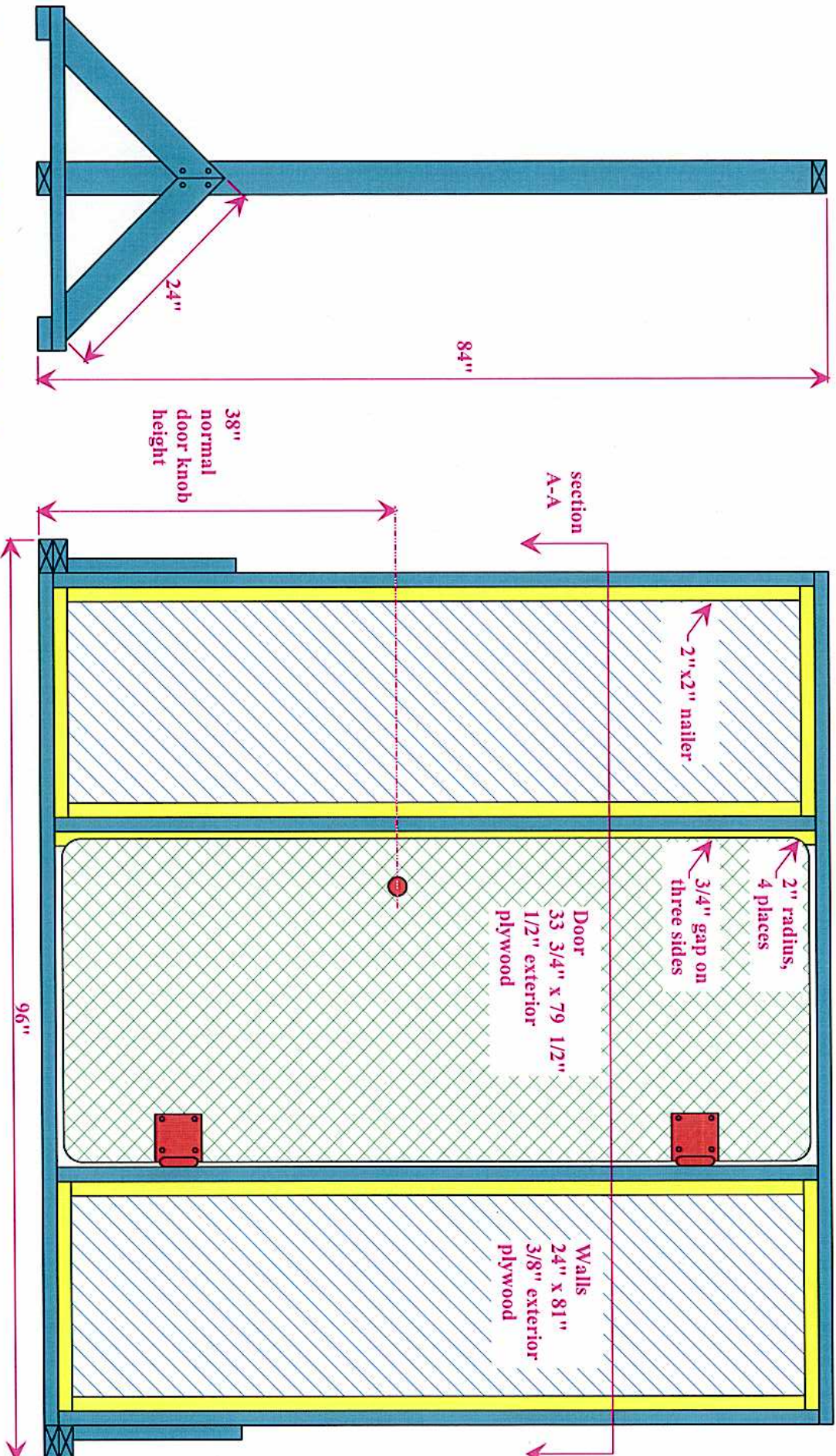
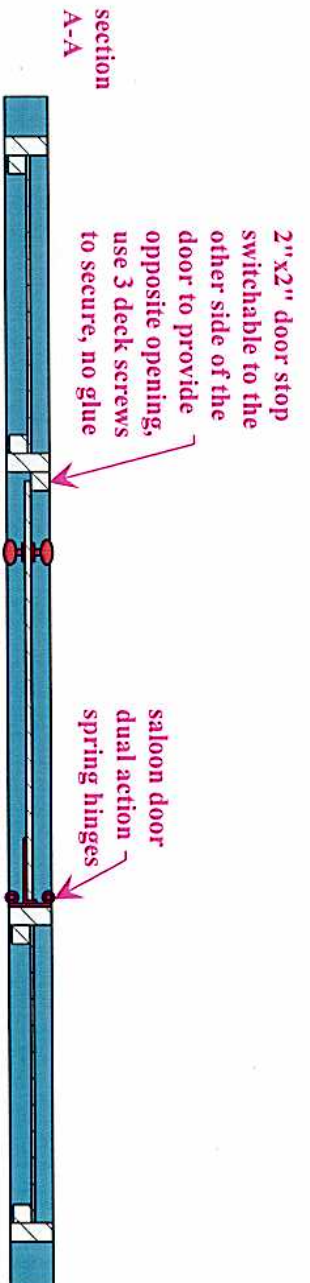
Door And Wall Prop

Lightweight, strong construction provides opening in or out, left or right.
The gap around the door makes the door less susceptible to warpage of the wall.
The frame, legs, nailers, and walls are assembled with 3" deck screws and polyurethane glue. The hinges and door knobs are through bolted to the frame and the door.
The wall panels are captive in the frame and prevent racking of the frame during storage or transport.



Door And Wall Prop

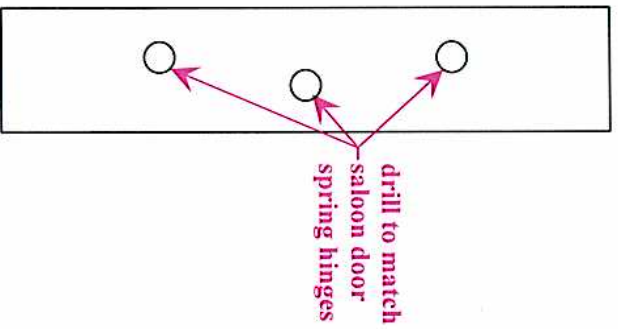
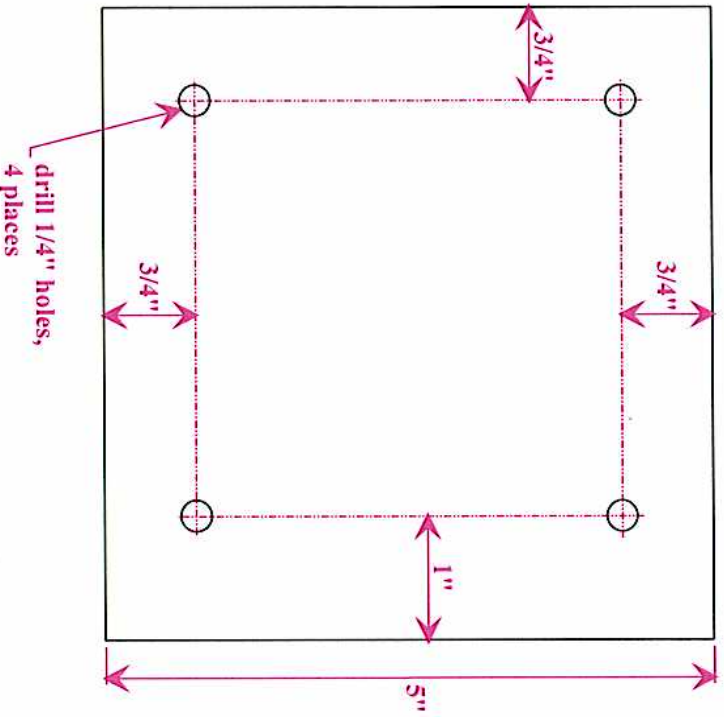
Construction Detail



Door And Wall Prop

Door Hinge Adaptor Brackets, make 2 from 1/16" sheet steel.

The standard saloon door hinges are made for a 1" to 1 1/2" thick door. These brackets allow adapting a plywood door to the hinges.



Door And Wall Prop

Material List

Qty	What	Where
8	8' two by four lumber	Frame and legs
6	8' two by two lumber	wall nailers and door stop door
1	sheet of 1/2" exterior plywood	walls
1	sheet of 3/8" exterior plywood	door hinges
2	dual action spring hinges (saloon door)	door knobs
2	all metal door knobs	door knobs
2	6" x 5" sheet steel 1/16" thick	hinge adaptors
50	3" deck screws	frame and legs
50	2 1/2" deck screws	nailers
50	1 1/2" deck screws	walls to nailers
8	1/4" x 1" carriage bolts, lock nuts	bolt door to adaptor
6	1/4" x 3/4" flat head bolts, washers, lock nuts	bolt adaptor to hinge
6	1/4" x 2" flat heat bolts, washers, lock nuts	bolt hinge to wall
2	#8-32 x 1 1/2" bolts and lock nuts	door knob attachment
1	polyurethane glue	every joint
1	gallon of paint	everywhere