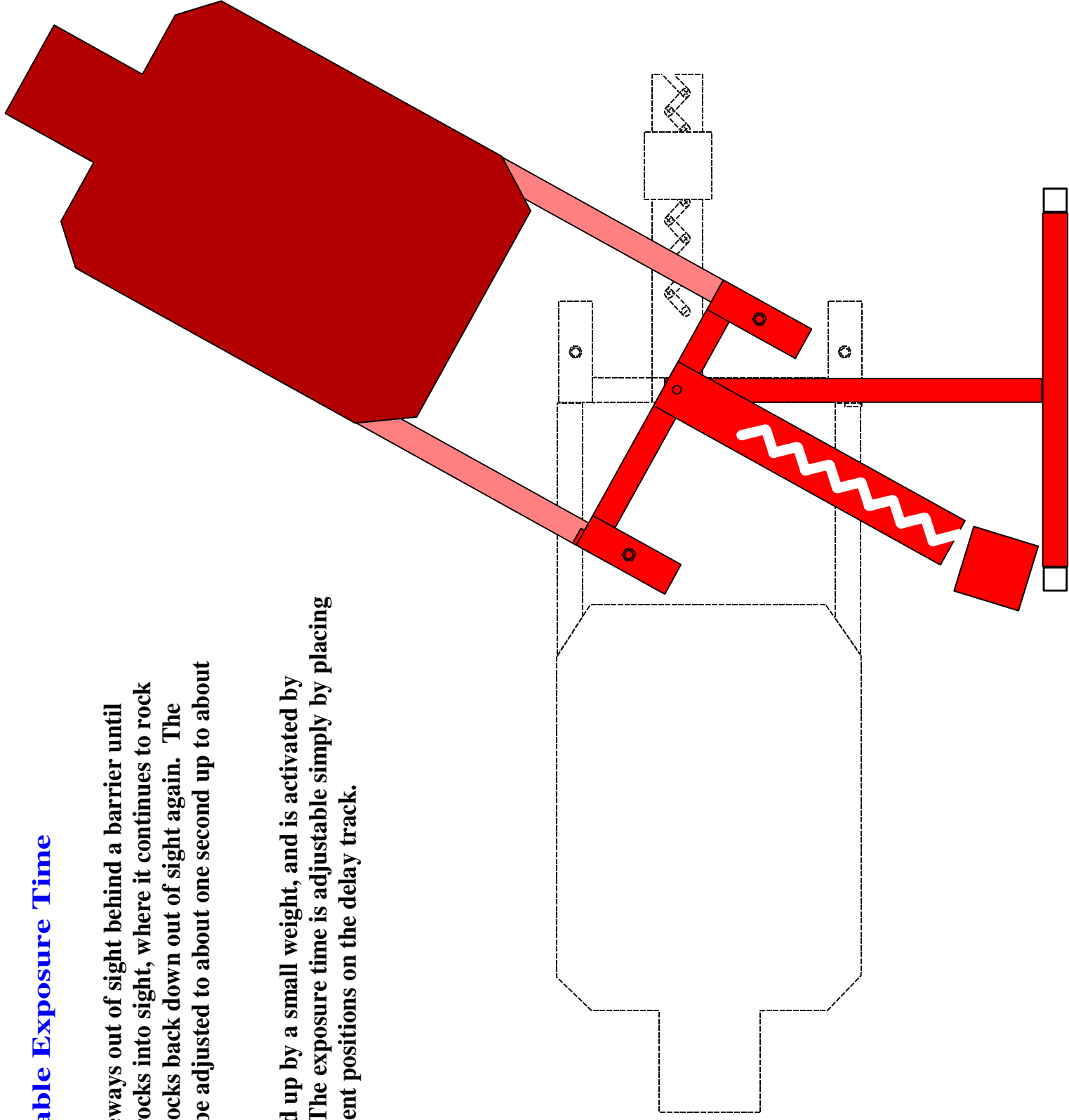


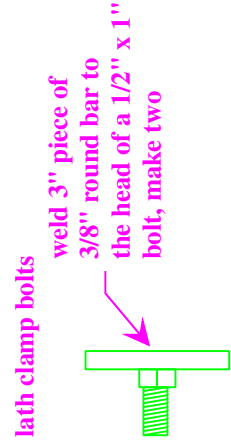
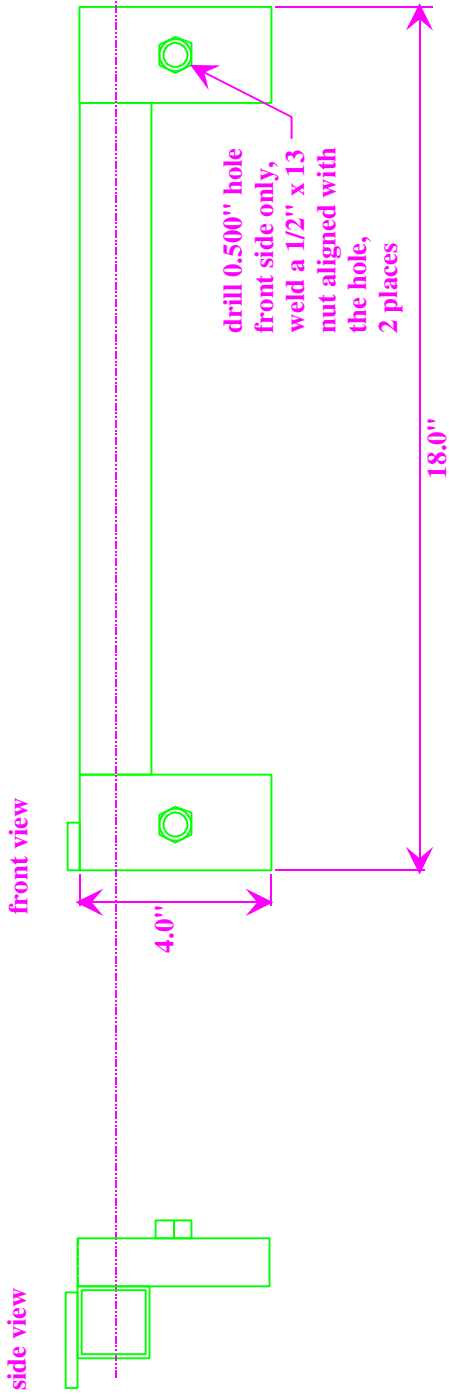
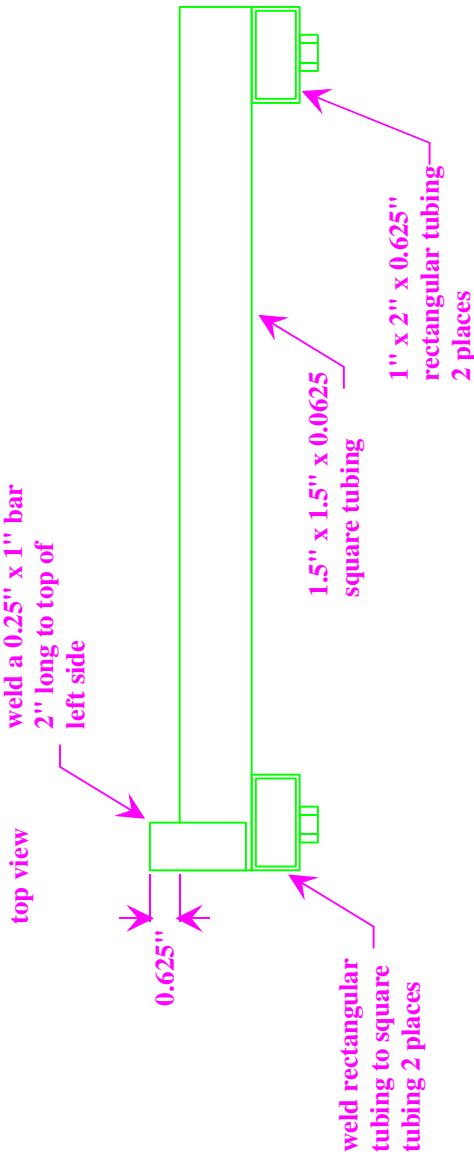
Reed Rattler With Adjustable Exposure Time

This target lies sideways out of sight behind a barrier until activated. It then rocks into sight, where it continues to rock for a bit and then rocks back down out of sight again. The exposure time can be adjusted to about one second up to about four seconds.

The target is rocked up by a small weight, and is activated by pulling on a rope. The exposure time is adjustable simply by placing the weight in different positions on the delay track.

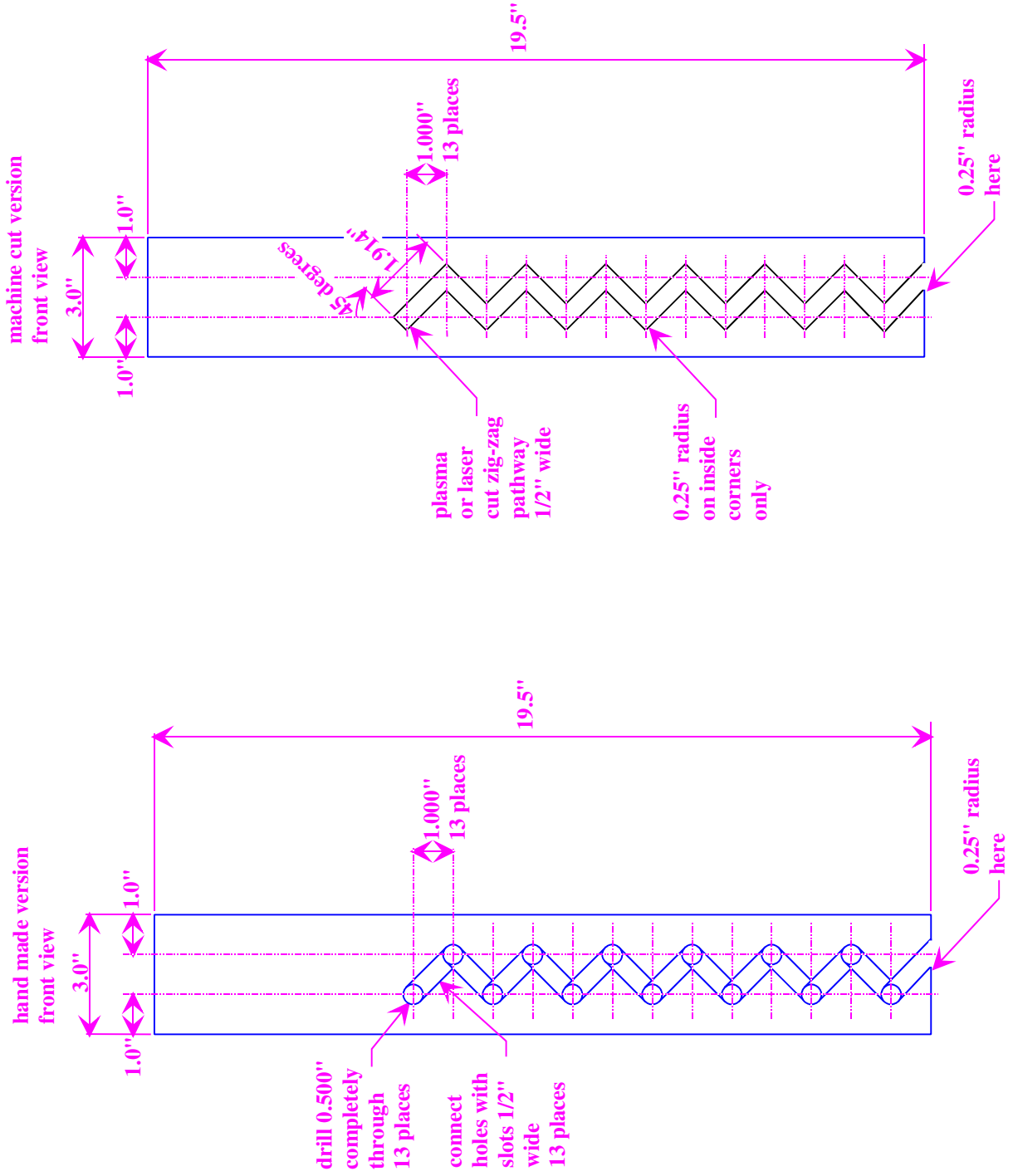


Reed Rattler Lath Holder



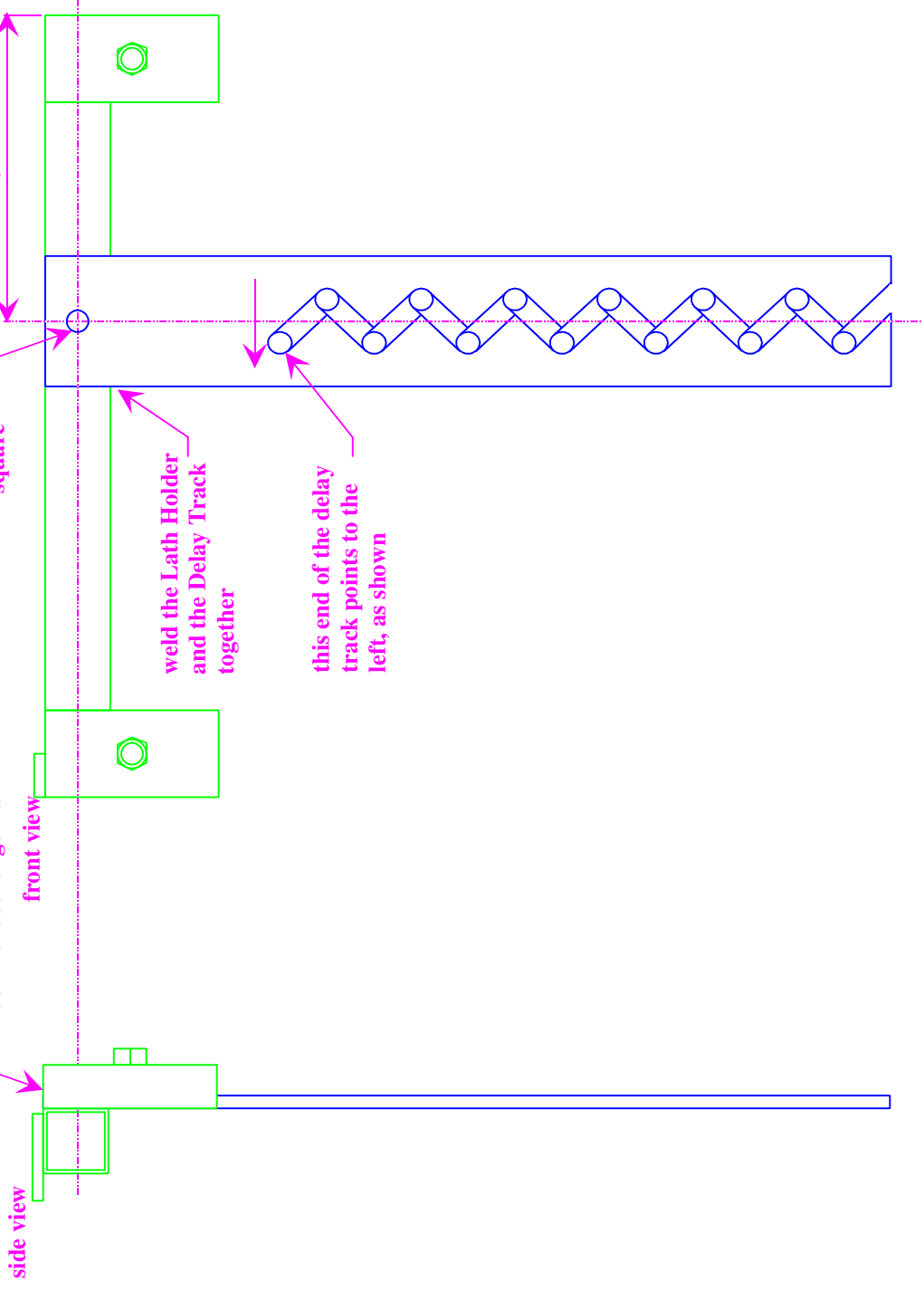
Reed Rattler Delay Track

Make 1 from 0.25" x 3" bar stock



Reed Rattler Rock Up Assembly

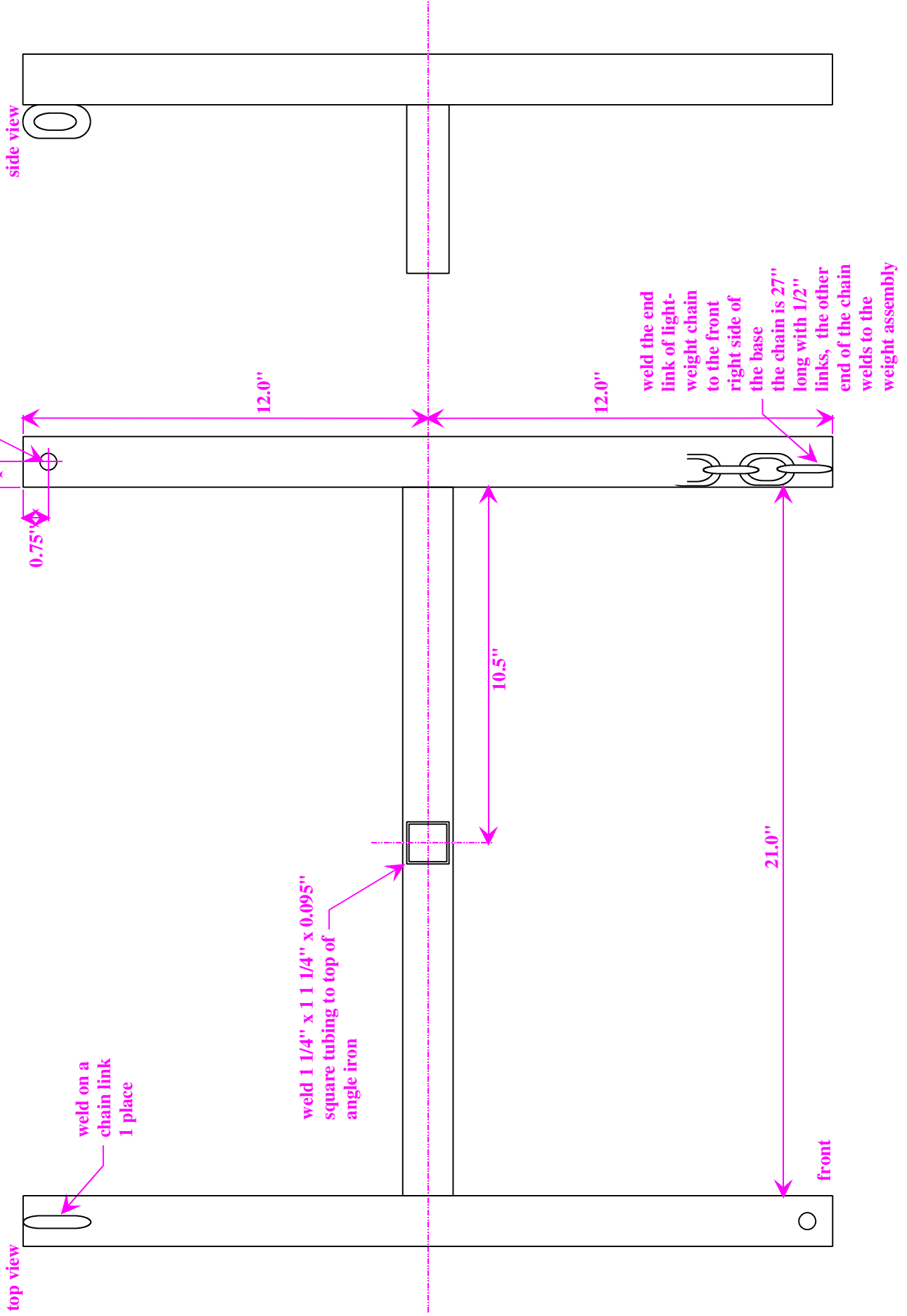
use 1" x 2" lath 38" long
to mount the target,
this target's movement
is based on a balance of
weights, and the lath
is part of that balance,
don't use longer lath



Reed Rattler

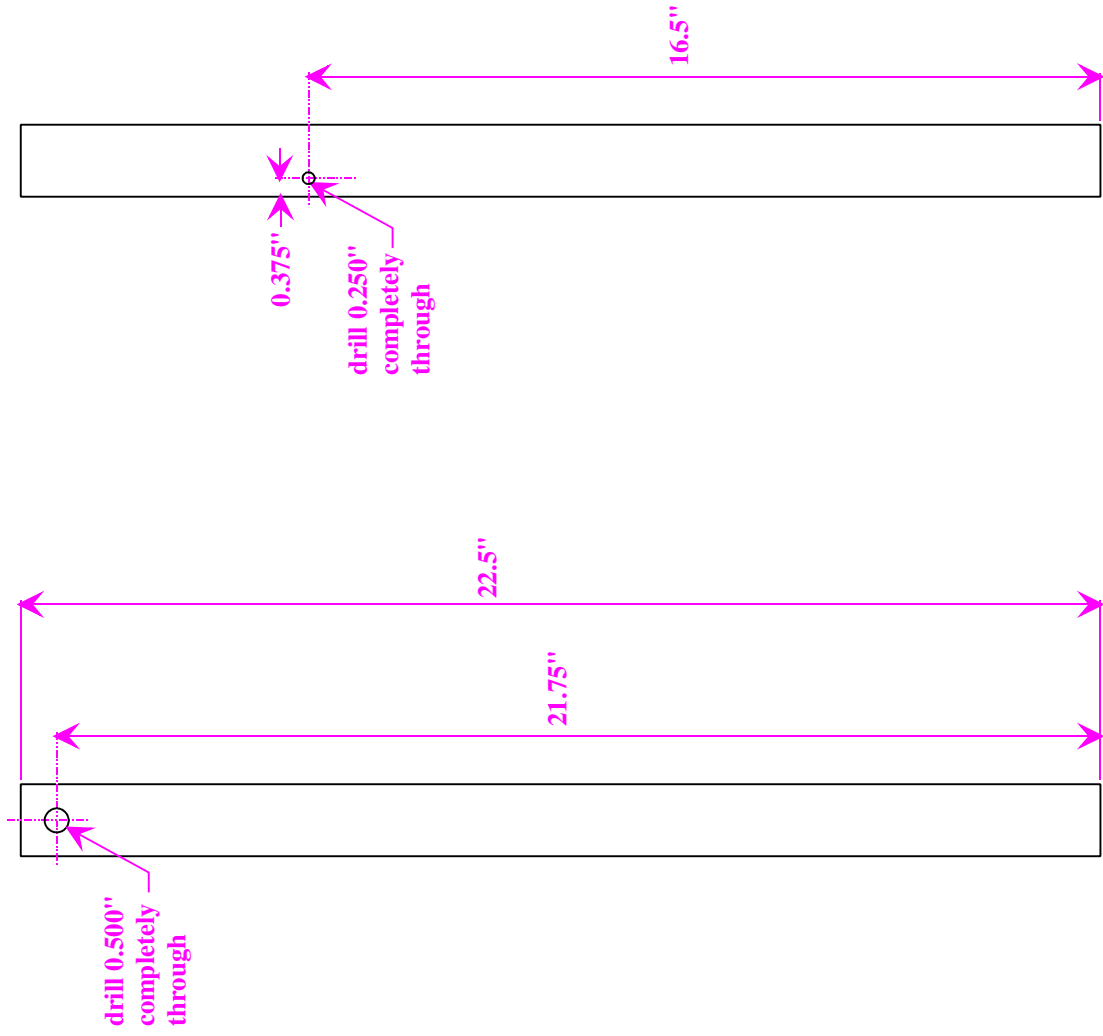
Base Assembly

Make 1 from 1.5" square tubing



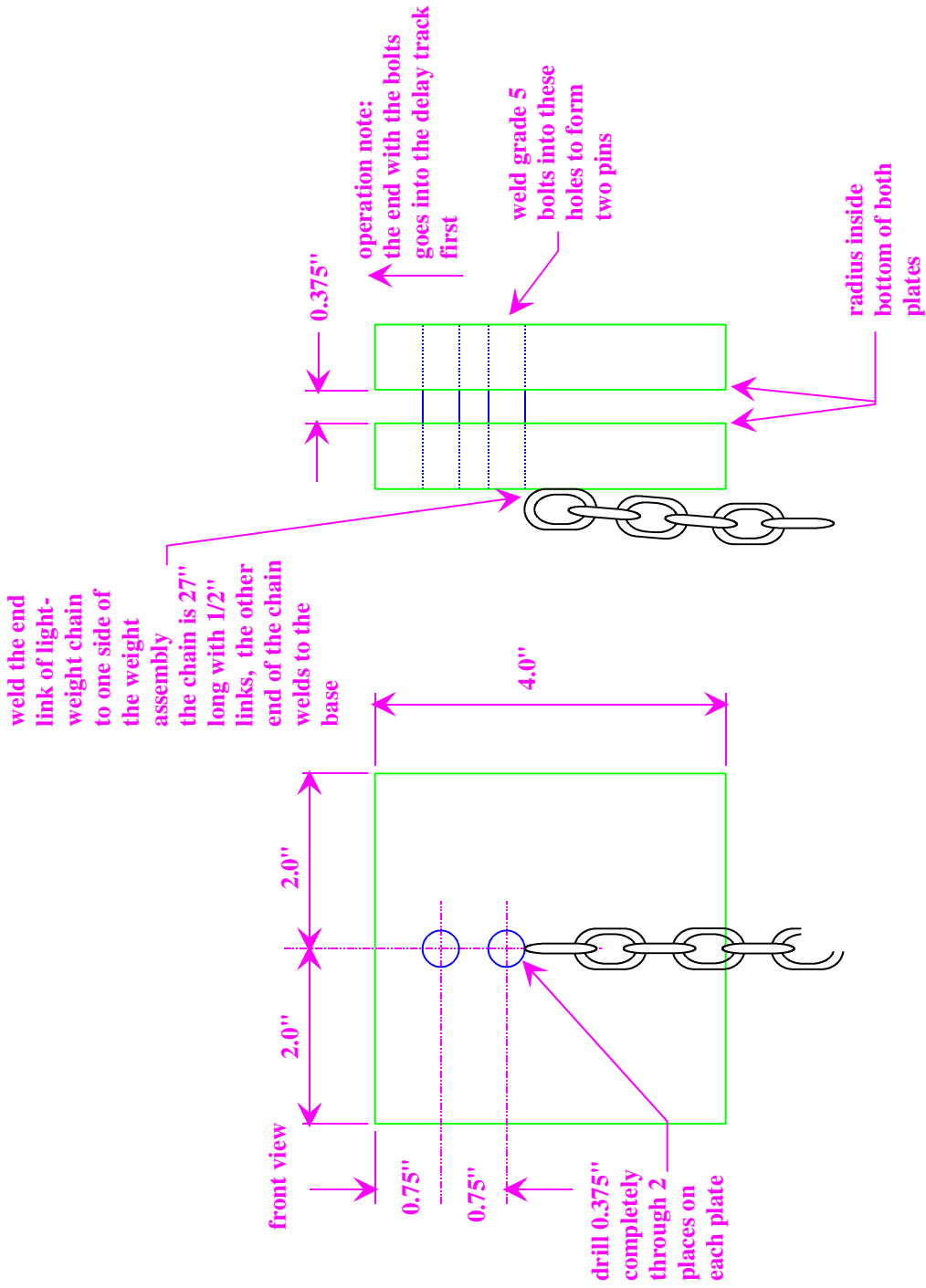
Reed Rattler Upright Assembly

Make 1 from 1.5" x 0.095" square tubing



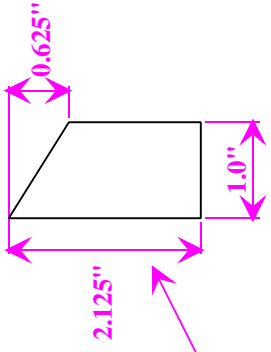
Reed Rattler Weight Assembly

Make 1 from 0.75" x 4" bar stock



Reed Rattler Release Arm Assembly

Make one from 3/4" x 3/8" bar stock



weld 1/4" x 1" bar
release plate to the
release arm

