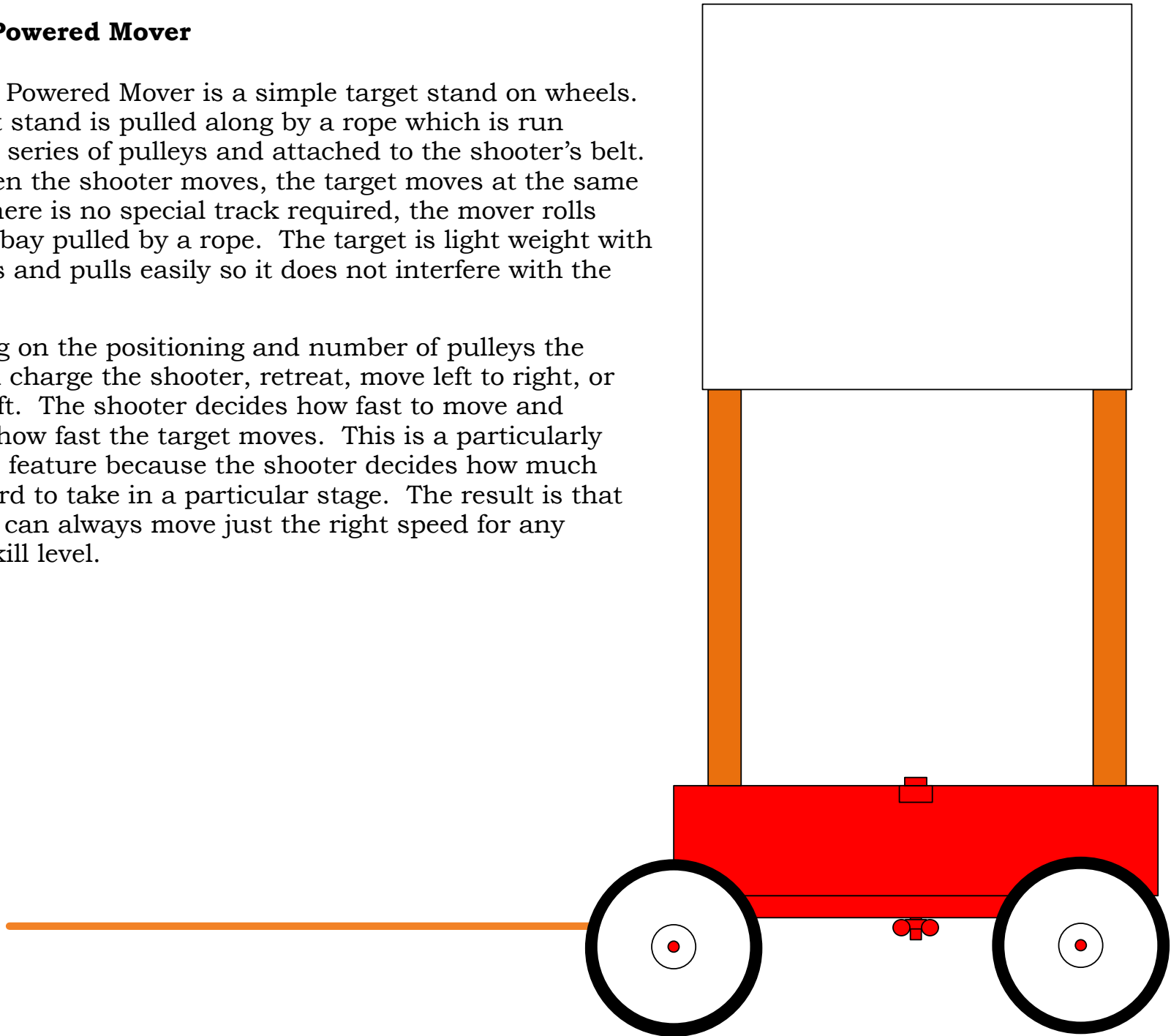


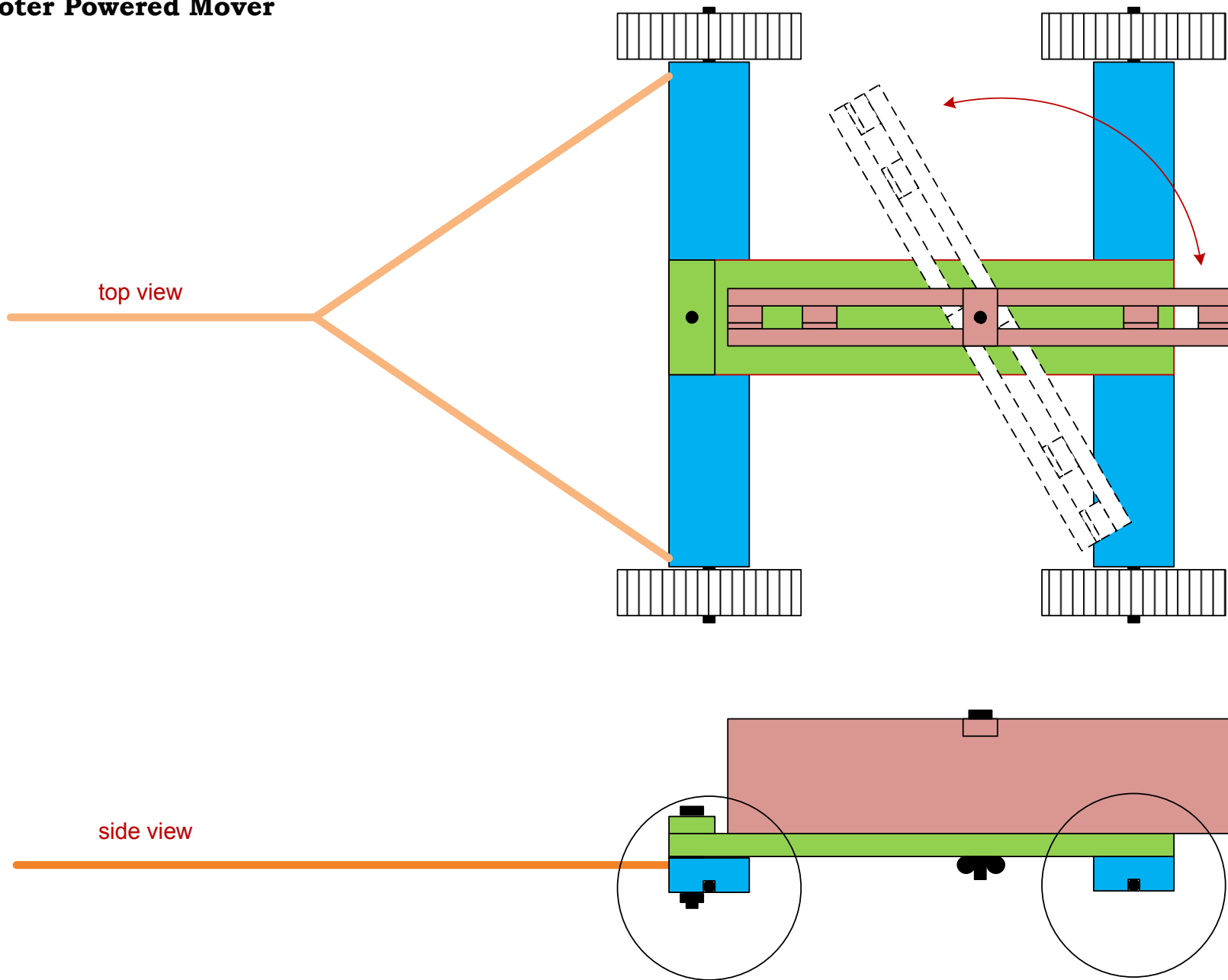
## Shooter Powered Mover

A Shooter Powered Mover is a simple target stand on wheels. The target stand is pulled along by a rope which is run through a series of pulleys and attached to the shooter's belt. Thus, when the shooter moves, the target moves at the same speed. There is no special track required, the mover rolls along the bay pulled by a rope. The target is light weight with big wheels and pulls easily so it does not interfere with the shooter.

Depending on the positioning and number of pulleys the target can charge the shooter, retreat, move left to right, or right to left. The shooter decides how fast to move and therefore how fast the target moves. This is a particularly wonderful feature because the shooter decides how much risk/reward to take in a particular stage. The result is that the target can always move just the right speed for any shooter skill level.

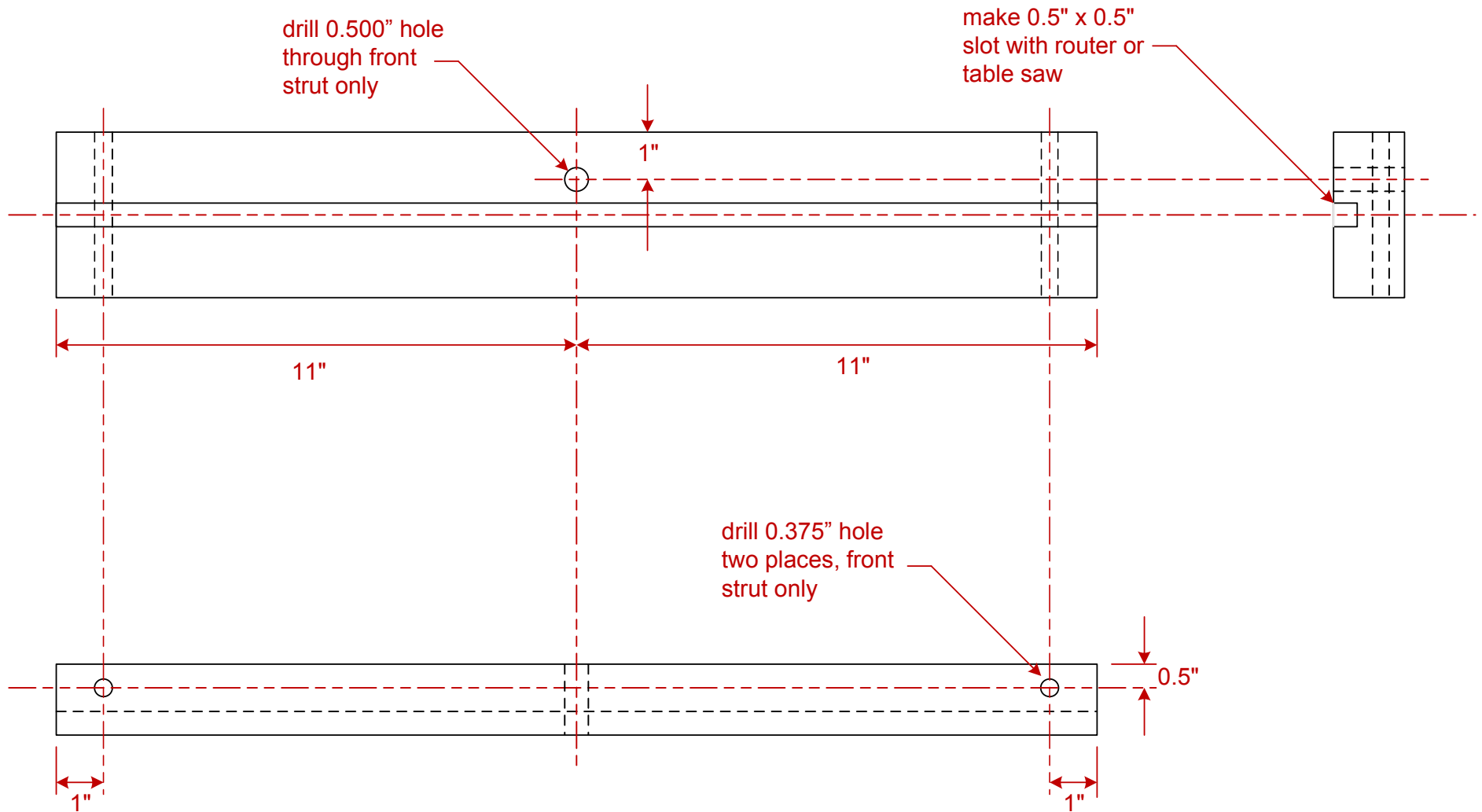


# Shooter Powered Mover



# Shooter Powered Mover

**Axle Strut, make two from 2"x4" douglas fir**





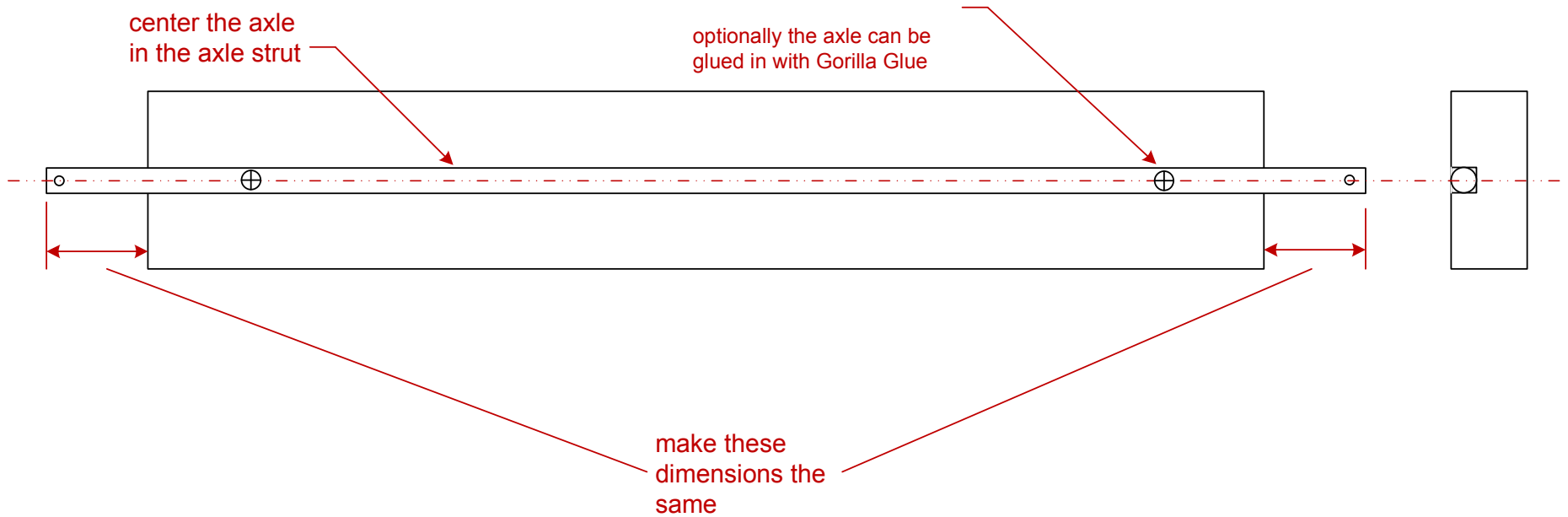
# Shooter Powered Mover

## Axle Assembly, make two

attach axle to the axle strut  
with 1.25" deck screws  
(using pre-drill holes in the  
2"x4")

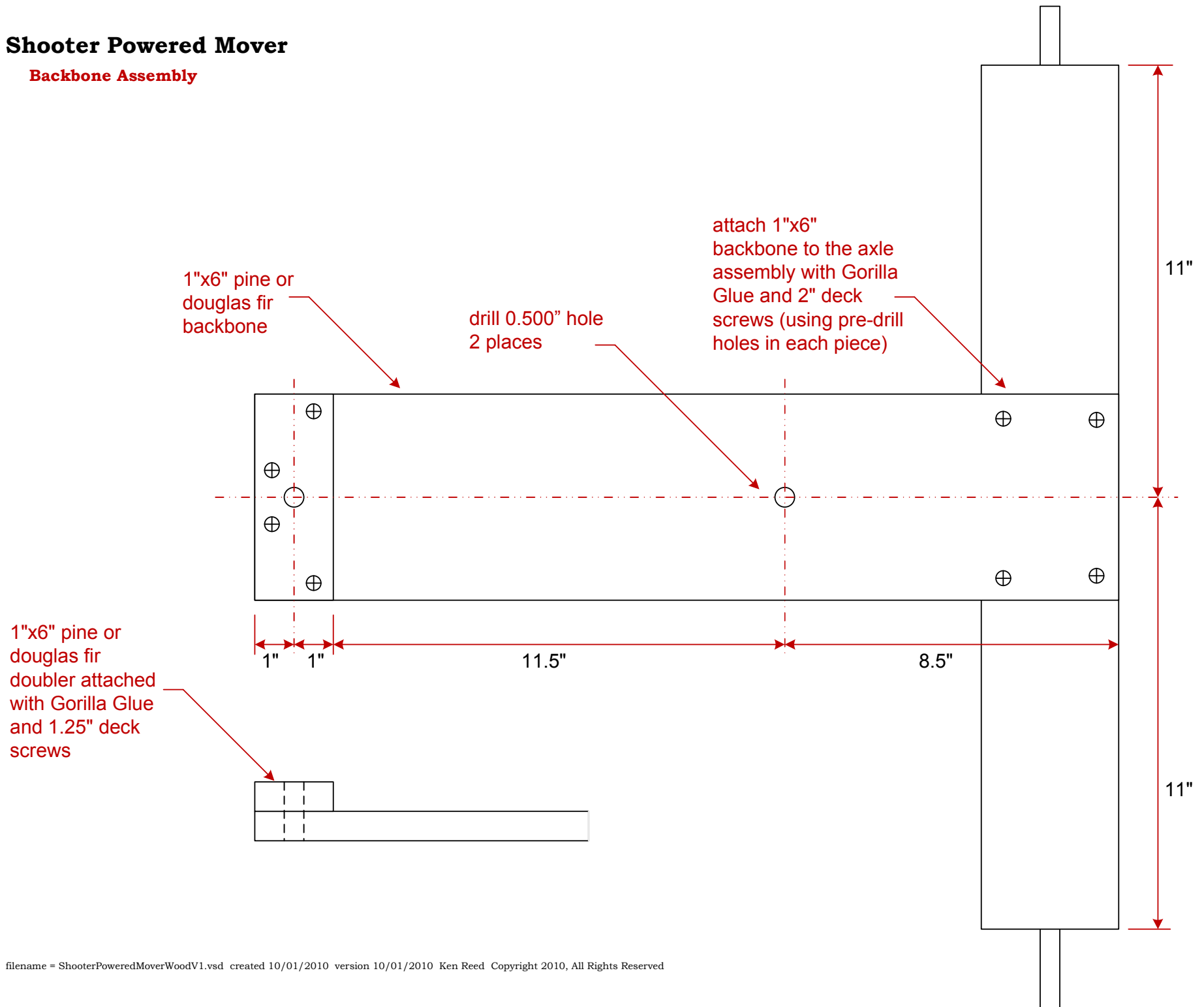
center the axle  
in the axle strut

optionally the axle can be  
glued in with Gorilla Glue



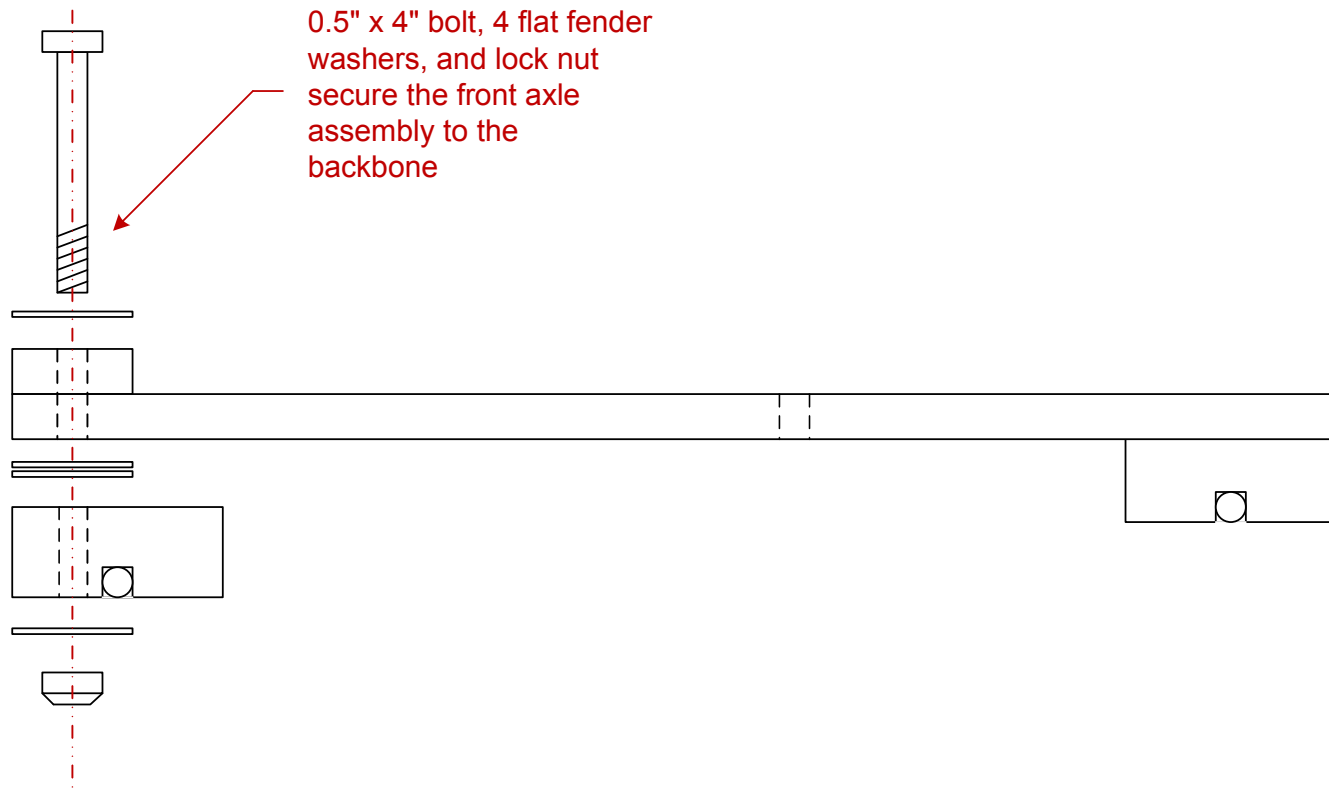
# Shooter Powered Mover

## Backbone Assembly



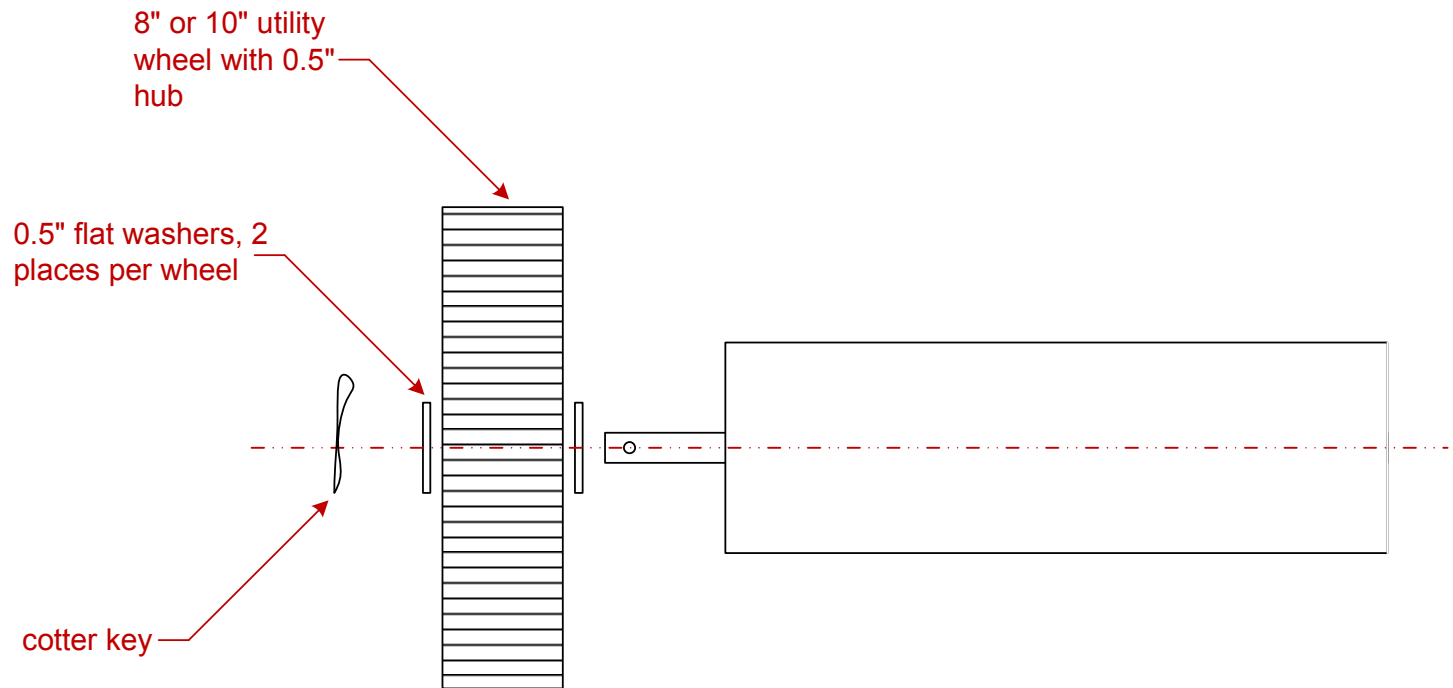
# Shooter Powered Mover

## Steering Assembly



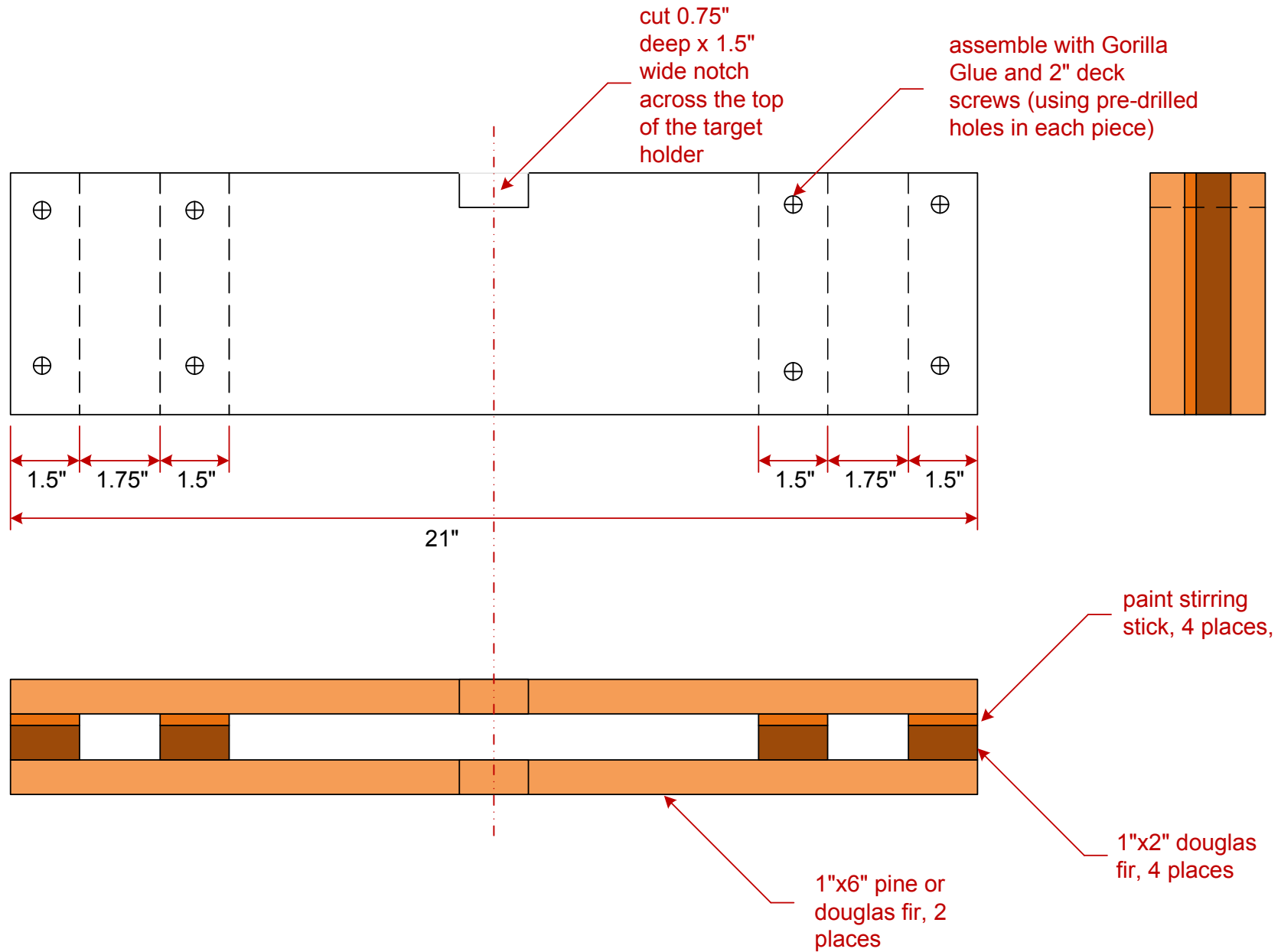
# Shooter Powered Mover

Wheel Assembly, repeat 4 times



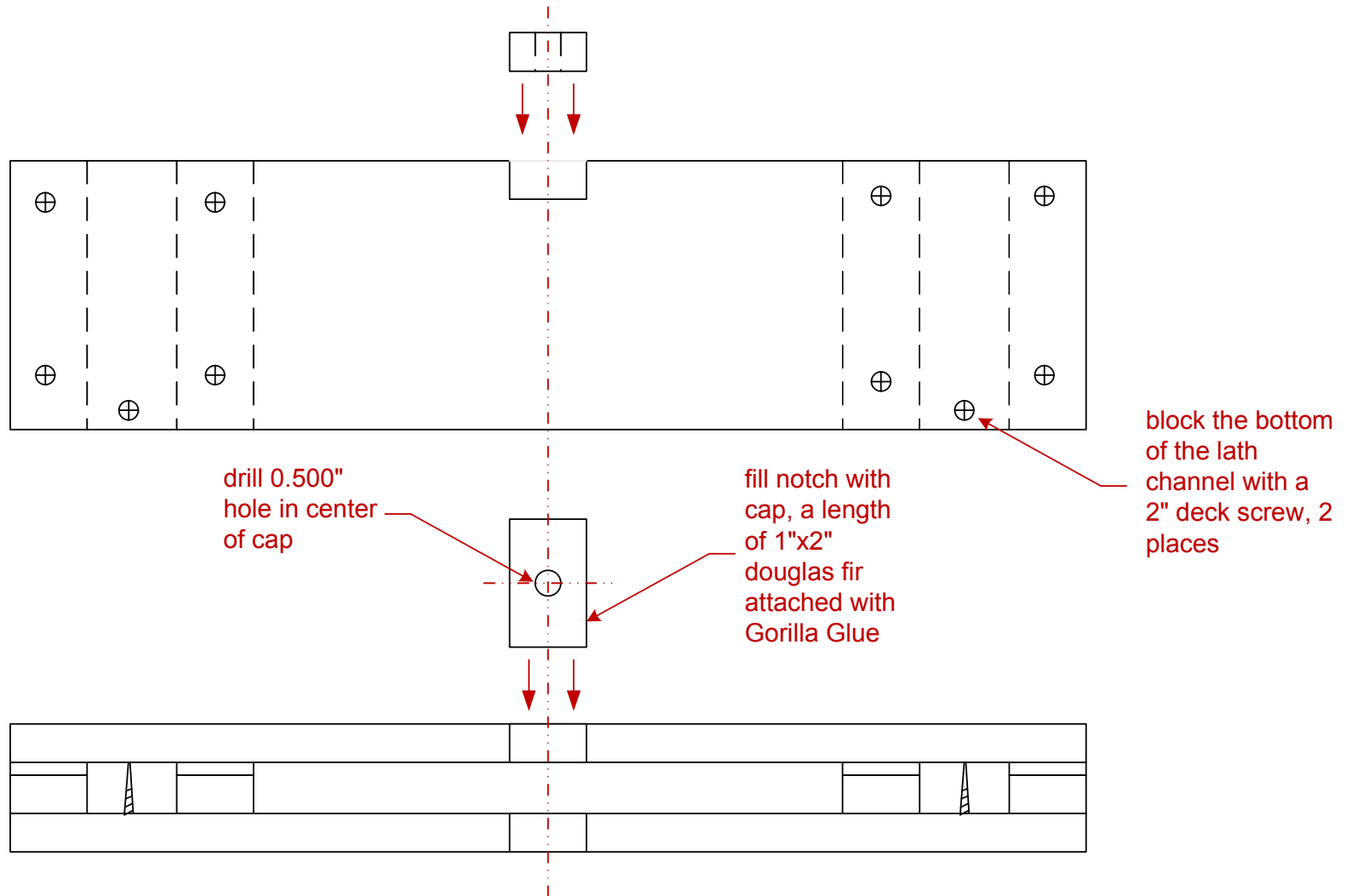
# Shooter Powered Mover

## Target Holder, make one

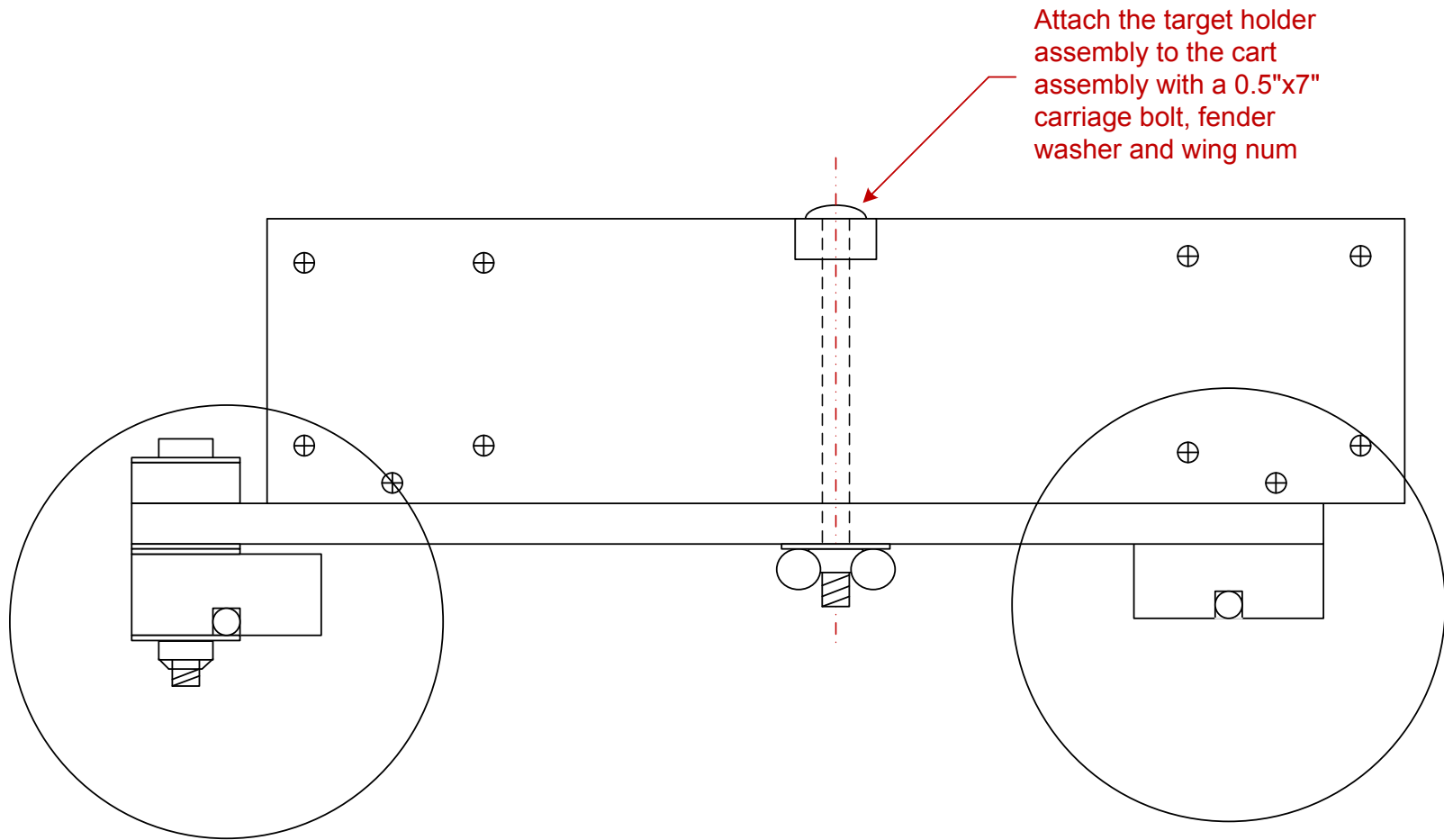


# Shooter Powered Mover

Target Holder Assembly. make one



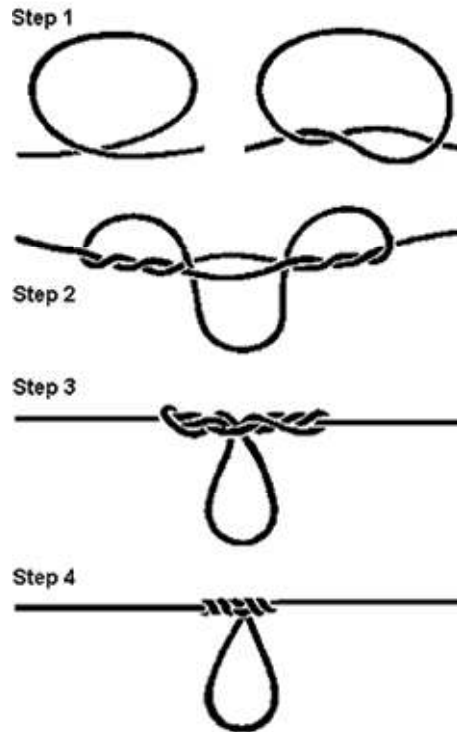
# Shooter Powered Mover



# Shooter Powered Mover

**Tow Harness, make one from ¼" rope**

A) Tie the Dropper Loop knot in the center of a 48" length of ¼" rope.



B) Trim the free ends of the rope to the same length, and seal the ends of the rope.

C) Insert end of rope into the cross drilled holes in the front axle assembly and tie a knot, 2 places

